

The proposed European criteria

Moderator: Yann-Maël Bideau
(European Commission)

Speakers:

Raquel Blave Gomez (ED-AFFICHE)
Dorothy Kelly (EDLab)
Marc Vandewalle (ETIKETA)
Mario Calabrese (FOCI)
Ramón Martínez (JEDI)
Simona Iftimescu (SMARTT)

EVENT: A BLUEPRINT FOR A EUROPEAN DEGREE | 29 APRIL

building the
EUROPEAN EDUCATION AREA



European policy experimentation in higher education:
piloting a joint European degree label

ERASMUS-EDU-2022-POL-EXP-EUdegree

EDLab



Co-funded by
the European Union



Piloting a joint
European degree
label

European policy experimentation in higher education

- **4 Alliances represented:** Arqus, ENLIGHT, EUTOPIA, SEA-EU
- **13 Full partners** from 5 countries
- **Diverse associate partners:** national ministries and quality assurance agencies, European and global university networks, student and alumni associations, along with other partner universities from our four alliances.



General considerations

Added value

- Solutions to longstanding challenges in EHEA
- **Marker of excellence in European jointness** (distinctive, easily recognisable, reputational value, incentive for transformation at all levels)
- Criteria restrictive, guaranteeing excellence, while **recognising diversity**
- Intermediate step towards full ED

Scope

- All HE EQF levels (including EQF5 where appropriate)
- Microcredentials and similar

Criteria



- All criteria **mandatory**
- **Clear and transparent**, avoiding modality and examples
- **Glossary and detailed guidelines**
- Clear correspondence with headings
- All aspects of programmes- organization and management, learning experience, student and staff support, European core values
- **Conceptual organisation of criteria**
- Role of staff
- Mindful of institutional contexts (not all at programme level)

*Reference to
existing EHEA tools
& policies*

- **Explicit link to ESG, EA... ensuring synergies**
- **Alignment and coherence with EU policies in general** (Treaty, EEA, ERA, ESU, language policy, cohesion policy, environmental sustainability...)

*Evaluation of
compliance*

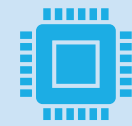
- Incorporation into **EA** procedures (EQAR-registered agencies)
- Period to redress shortcomings

*Award and
certification of
label*

- Award to programme, use of logo, registered in DEQAR
- Additional certificates for students, traceable and verifiable

Funding

- For preparation of JPs
- For students participating



Cooperation throughout the process – within and between pilots, with the associates (unis, NAs, QAAs, networks, students, graduates, employers...)



Broad agreement, although not unanimity



Consensus-seeking



Enthusiasm

Proposal for a Council
Recommendation on a
European Quality
Assurance and
Recognition System in
Higher Education

Annex II

European Criteria for a European Degree (Label)

The European criteria set out the key features of the European degree and the European label.

They **guarantee the respect of the highest standards** to offer transnational programmes and transnational degrees and explains why it is **different from degrees awarded in other parts of the world**.

HEIs would be able to award the European degree based on an assessment by **existing national structures** (for example, national quality assurance agencies) of whether the joint programme fulfils all these European criteria.

The proposed European criteria that are presented below are the result of a huge collaborative work and testing that involved more than **140 higher education institutions across all Member States, 17 ministries and 20 national QA agencies, students' organisations and economic and social partners**.



European criteria for a European degree (label)

	EQF Levels
<ul style="list-style-type: none"> The JP is offered by at least 2 HEI from at least 2 different Member States. 	6,7,8
<ul style="list-style-type: none"> The JP is jointly designed and jointly delivered by all the HEI involved The JP leads to the award of a joint degree. A joint Diploma Supplement is issued to students. The JP describes the learning outcomes and credits in line with the ECTS User Guide. 	6,7,8 6,7,8 6,7 6,7
<ul style="list-style-type: none"> The JP has joint policies, procedures and/or arrangements defining curriculum planning and delivery, as well as all organisational and administrative matters. Students' representatives are part of the decision-making process to define the joint policies and procedures and/or arrangements. 	6,7,8
<ul style="list-style-type: none"> Internal and external QA is conducted in accordance with the Standards and Guidelines for QA in the EHEA (ESG). The HEI, the study field or the programme are evaluated by an EQAR registered agency. The JP is evaluated using the standards of the European approach for QA of JP (EA). 	6.7.8 6,7,8
<ul style="list-style-type: none"> The JP monitors graduates through a graduate tracking system 	6,7,8

European criteria for a European degree (label)

EQF
Levels

- The JP is designed and continuously enhanced and delivered in a way that encourages **students to take an active role in the learning process**. Assessment of students reflects this approach

6,7,8

- The JP programme includes embedded **interdisciplinarity components**

6,7,8

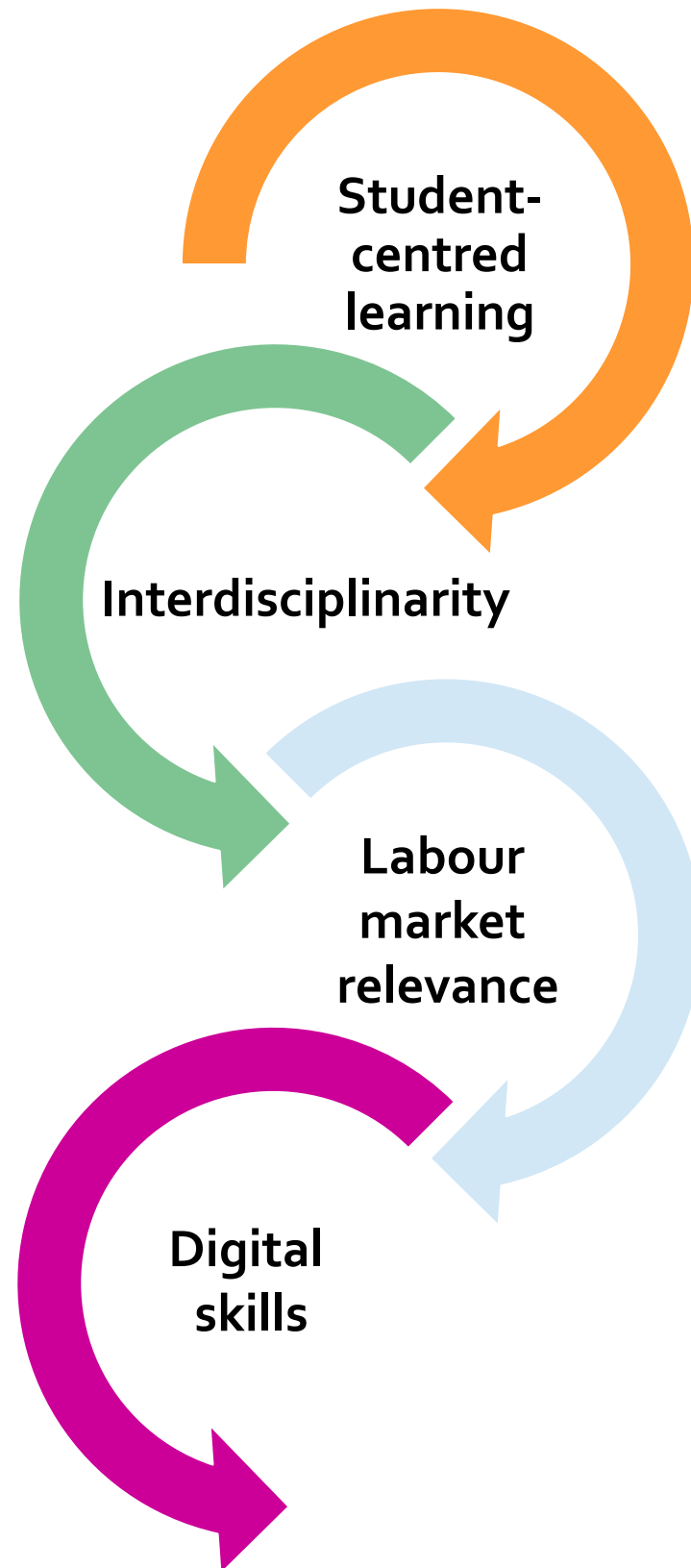
- The JP aligns with labour market requirements by incorporating **intersectoral components or activities** and the development of **transversal skills**

6,7,8

- The JP includes components and actions related to the development of **advanced digital skills** of students, tailored to the capacities and circumstances of the JP, ensuring alignment with its scope and scholarly focus.

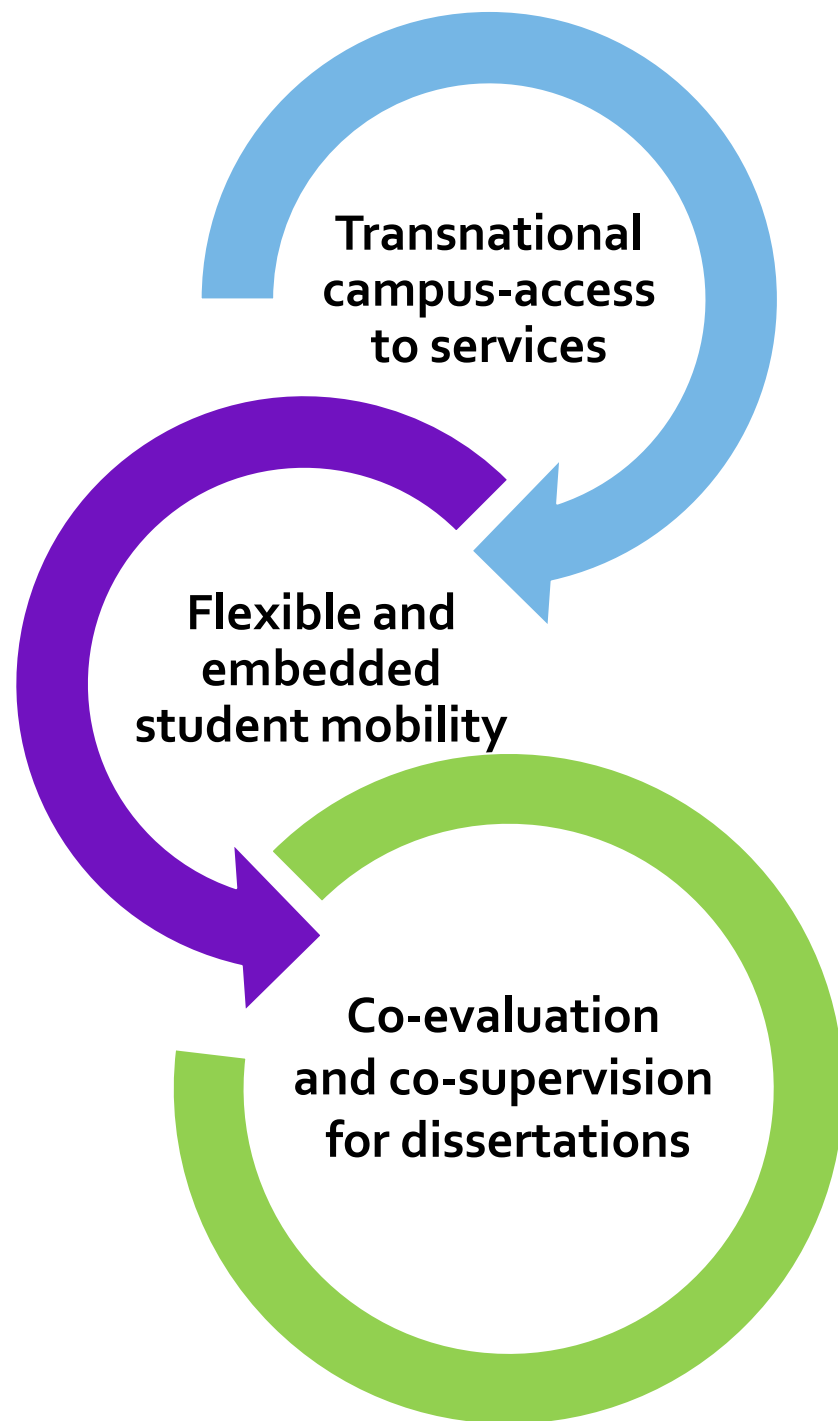
6,7,8

Learning experience



European criteria for a European degree (label)

Learning experience



- Programme has joint policies for students and staff to have **access to relevant services in all participating higher educational institutions** under equivalent conditions as all enrolled students and local staff

EQF Levels

6,7,8

- The JP offers **deep intercultural experience**, including a minimum of **1 period of student physical mobility** (that can be split) at 1 or more partner institution(s) representing overall at least **60 ECTS at EQF 6 level and 30 ECTS or EQF 7 level**. The JP has a policy offering **alternatives for students who are unable to travel**.

6,7

- The JP offers deep intercultural experience, including a total of at least **6 months of physical mobility at one or more partner(s) institutions**. The JP has a policy offering alternatives for students who are unable to travel.

8

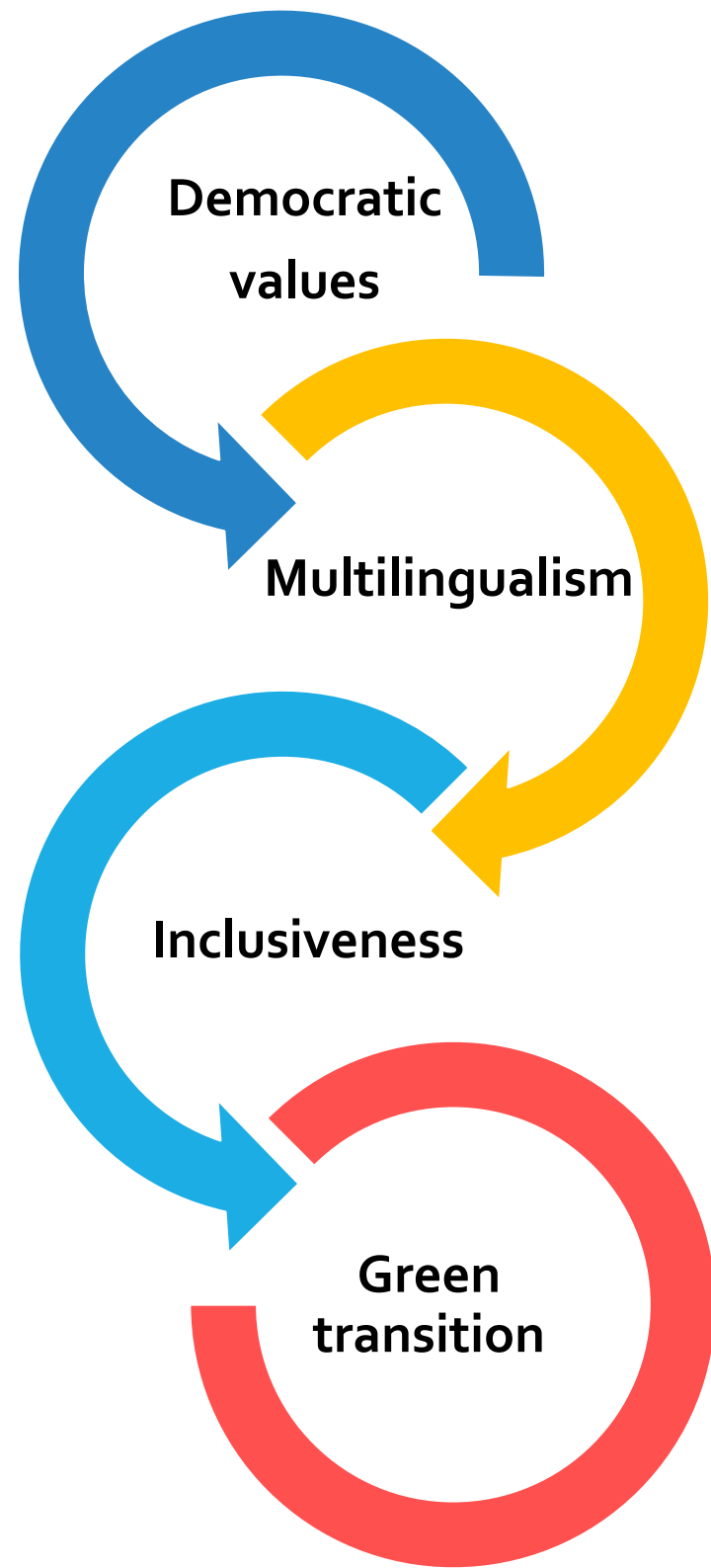
- Dissertations are supervised by at least 2 supervisors and co-evaluated by co-supervisors or a committee with members from **at least 2 different institutions located in 2 different countries**.

8

European criteria for a European degree (label)

EQF Levels

European values



■ The JP's joint policies promote and adhere to democratic values.

6,7,8

■ During the JP, each student is exposed to at least 2 different EU languages.

6,7,8

■ The JP commits to wide participation by fostering diversity, equality, and inclusion and by adopting tailored measures to support students and staff with fewer opportunities.

6,7,8

■ The JP commits to respect the principles of the European Charter for Research.

8

■ The JP has policies and actions related to environmental sustainability and implements measures to minimise the environmental footprint of its activities.

6,7,8

Thank you!

edlab.management@ugr.es

<https://www.ed-lab.eu/>



EDLab

EUROPEAN DEGREE LABEL

Institutional Laboratory



Co-funded by
the European Union

The proposed European criteria

Moderator: Yann-Maël Bideau
(European Commission)

Speakers:

- Raquel Blave Gomez (ED-AFFICHE)
- Dorothy Kelly (EDLab)
- Marc Vandewalle (ETIKETA)
- Mario Calabrese (FOCI)
- Ramón Martínez (JEDI)
- Simona Iftimescu (SMARTT)

EVENT: A BLUEPRINT FOR A EUROPEAN DEGREE | 29 APRIL