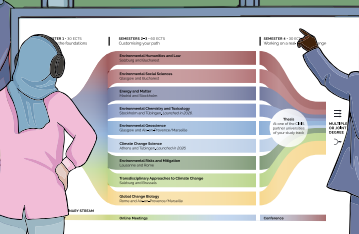




Transdisciplinary Studies of Climate, Environment, and Energy



# Puzzling and Rewarding



## **Binoculars on. Eyes forward**

Strong leadership must keep "the big picture" in sight, steering daily decisions towards the long-term destination. *Identify leaders who can carry the vision, inspire others, and effectively communicate so it becomes a shared compass.*



## **1 programme. 11+ voices. 1 song**

Perfect harmony doesn't just happen – it takes practice. *Create predictability, inclusiveness, transparency in governance so you keep everyone's contribution in tune.*



## **Heavy lift? We're all in!**

Joint programmes demand more than enthusiasm – they thrive on sustained commitment of time, people, and resources from every partner university. *Be upfront about long-term commitments from day one, so partners can prepare and fully invest themselves.*



## **No lone architects. Just co-creators**

Co-creation builds trust, shared ownership, and a programme that truly reflects its community. *Bring all stakeholders into the room early on – physically or virtually – and keep them engaged throughout.*



## **Different journeys. Same train**

For students with diverse profiles and aspirations, a programme must embrace inclusiveness and respond to different learning needs, ensuring all can thrive and contribute. *Design flexible pathways that value diversity as a core strength and adapt to different learner profiles.*



## **Tracks don't limit us. They launch us**

Students who share a common journey first, build a strong cohort identity and a transdisciplinary foundation before specialising. *Combine a shared foundation with multiple pathways for progression, so students remain a cohesive community while pursuing their academic passions.*



## **Still moving. Still fixing. Still dreaming**

A joint programme evolves to remain relevant, responsive, and ambitious, ensuring it grows alongside the needs of its learners and the world it serves. *Build review points into your timeline so adaptation is expected, welcomed, and part of the culture.*