



Second Call for Proposals for CIVIS Hub 4 Activities *Cities, Mobilities and Territories*

The deadline for this call is the 15th of November 2021.

1. HUB COUNCIL MEMBERS

If you need support for finding partners or guidance on CIVIS approach, please contact one of the Hub 4 Council members at your university or the chairperson of the Hub 4 Council. Please find below the list of Hub 4 Council members:

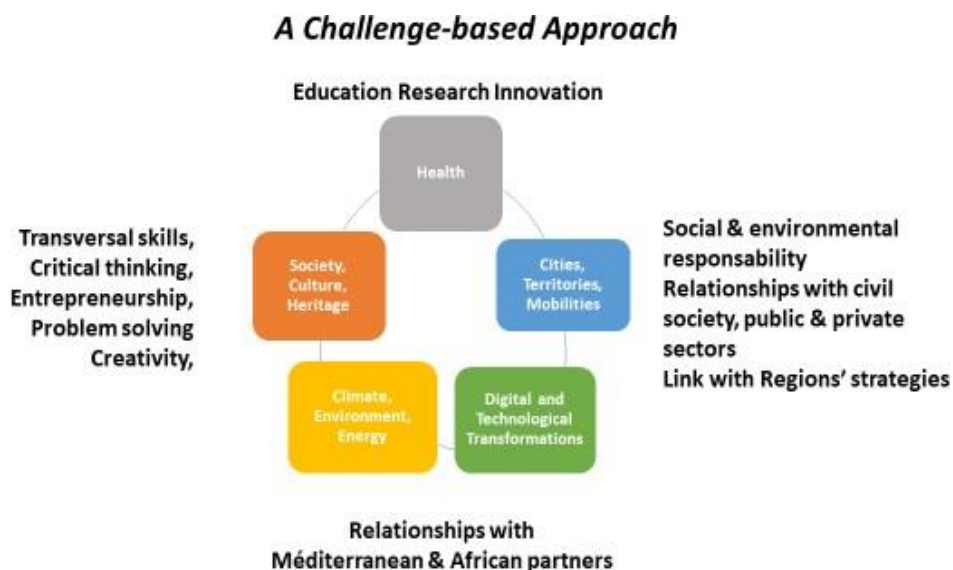
| Chairperson | | | |
|---|----------------|-------------------|--|
| Université libre de Bruxelles (ULB) | Lemaire | Judith | judith.lemaire@ulb.be |
| Université libre de Bruxelles (ULB) | Wayens | Benjamin | benjamin.wayens@ulb.be |
| Hub Council Members | | | |
| Université libre de Bruxelles (ULB) | Tojerow | Ilan | itojerow@ulb.ac.be |
| Aix-Marseille Université (AMU) | Alaux | Christophe | christophe.alaux@univ-amu.fr |
| Aix-Marseille Université (AMU) | Nicolas | Maxime | maxime.nicolas@univ-amu.fr |
| National Kapodistrian University of Athens (NKUA) | Chlepas | Nikolaos-Komninos | chlepanike@pspa.uoa.gr |
| National Kapodistrian University of Athens (NKUA) | Efstratiou | Pavlos-Michael | pefstrat@law.uoa.gr |
| Universitatea din București (UB) | Iucu | Romică | romita.iucu@unibuc.ro |
| Universitatea din București (UB) | Ioja | Cristian | cristian.ioja@geo.unibuc.ro |
| Universidad Autónoma de Madrid (UAM) | Hidalgo | Carmen | carmen.hidalgog@uam.es |
| Universidad Autónoma de Madrid (UAM) | Alonso Almeida | María del Mar | mar.alonso@uam.es |
| Sapienza Università di Roma (SUR) | Battisti | Alessandra | alessandra.battisti@uniroma1.it |
| Sapienza Università di Roma (SUR) | Ricci | Stefano | stefano.ricci@uniroma1.it |
| Stockholms Universitet (SU) | Schmitt | Peter | peter.schmitt@humangeo.su.se |
| Stockholms Universitet (SU) | Smas | Lukas | lukas.smas@humangeo.su.se |
| Eberhard Karls Universität Tübingen (EKTU) | Kühne | Olaf | olaf.kuehne@uni-tuebingen.de |
| University of Glasgow (UG) | Beveridge | Ross | Ross.Beveridge@glasgow.ac.uk |
| Hub Coordinator | | | |

| | | | |
|-------------------------------------|-----------|-------|--|
| Université libre de Bruxelles (ULB) | Sbaraglia | Fanny | Fanny.sbaraglia@ulb.be |
|-------------------------------------|-----------|-------|--|

2. CONTEXT - A challenge-based approach to fuel our civic, impact-driven Alliance

CIVIS European University Alliance is a far-reaching initiative whose goal is to have a significant impact on our societies' development, locally and globally. We will intertwine relationships at all scales with a wide diversity of stakeholders, in order to implement educational and research activities grounded in our fast-changing ecosystems.

Five major challenges ("Hubs") of local and global reach lie at the core of our actions: Climate, Environment, Energy; Health; Digital and Technological Transformations; Cities, Territories, Mobilities; Society, Culture, Heritage.



CIVIS Hubs are "academic collaboration spaces" to develop multinational and multi-disciplinary educational and research offers. They will be offering joint degrees, innovative learning practices and blended mobility at Bachelor and Master's levels, multidisciplinary research programs as well as public and/or private partnerships. CIVIS Hubs will remain at the forefront of civic engagement, maintaining the "**challenge-based**" approach to ensure that the European University remain relevant and useful to society, addressing new challenges as they arise.

CIVIS Hubs will support academics willing to contribute to tackle these challenges together with other European colleagues and involve respective staff, faculty and researchers of the 8 member universities to work in **multidisciplinary teams to develop joint degrees, educational programs and research projects, using innovative pedagogies**. During the first phase of CIVIS Alliance, Hubs will be on developing a 'surge' of collaborations, which will be strategized during the consolidation phase.

The benefit of being part of CIVIS Hubs means being included in **nests to innovative educational programs linked to research and innovation**, address issues from a multidisciplinary and complementary perspective, develop high-level and multidisciplinary research collaborations. CIVIS Hubs will provide you access to a network of motivated lecturers and researchers from CIVIS universities ready to revolutionize the current higher education system and contribute to our societal challenges.

3. HUB 4 CITIES, MOBILITIES, TERRITORIES - Call for Activities

This call welcomes academic initiatives from CIVIS member universities:

- 1 - **New proposals** fulfilling the 3-partner criterion
- 2 - **Proposals submitted but not selected for another CIVIS Call.** Necessary adjustments of the original activity proposal should match the activity with the topics and priorities defined for this Hub Call.

We welcome proposals for education and research activities. Our objective is to **foster synergies among Education, research and innovation**. The activities can include courses, summer schools, workshops, semesters, project supervision and research exchanges. The proposed activities could include training & research projects with students as well as workshops/meetings of academic staff to develop future joint academic & research activities. At least one joint and interdisciplinary educational program shall be established within each Hub by the end of 2022 ('joint and interdisciplinary educational programs' could be CIVIS modules, CIVIS Micro-programmes* or multilateral MA programmes**, that can be built on existing joint degree programs between CIVIS partners).

We welcome proposals based on two levels of preparation:

1. Activities "**ready to go**" provided that they comply with the "must be fulfilled" criteria below. For these activities, we can offer CIVIS branding, networks and support as well as student and staff mobilities.
2. Activities at the "**planning stage**". These are activities for which planning is needed for implementation of joint teaching projects within the next academic year***. For these activities we can offer CIVIS networks and support as well as staff mobilities so that members can meet (virtually or physically) to exchange ideas.

The following criteria must be fulfilled (Eligibility criteria):

- Activities must involve 3 or more CIVIS partner universities.
- Activities must be directly relevant to the Hub 4 : Cities, Mobilities & Territories

The following criteria will be prioritized (Evaluation criteria):

- Inclusion of different disciplines and/or domains
- Inclusion of a comparative approach
- Potential for Civic engagement initiatives tied to Open Lab (WP3) activities
- Potential to work with African or Mediterranean partners
- Potential for economies of scale (support to fields that lack students/teachers, creating research time, very specialised fields)

* *CIVIS Micro-Programmes: Smaller units like courses and modules combined into 'micro-programmes' with a certification possibility to offer CIVIS students flexible learning pathways. In particular, with transdisciplinary course programmes, a possibility for students can be designed to follow their own interests, to deepen their knowledge and choose individually, into which fields they would like to gain deeper insights.*

***Multilateral MA programmes (to be discussed in faculties): Partners are asked to take an inventory of their Master's programs to see if they could be expanded to a joint program, and if so, work on joint*

modules as building blocks in the coming academic year.

**** CIVIS financial support is available until September 2022. However, long term visions for future calls and a second funding phase are encouraged.*

Hub 4 initiatives should address issues that are consistent with a framework, partly based on actions defined by the EU Urban Agenda (<https://futurium.ec.europa.eu/en/urban-agenda/action-plans>):

1. Climate and environmental challenges for cities

- Air quality
- Urban biodiversity
- Climate adaptation
- Waste management
- Sustainable land use
- Sustainable mobility and transport systems
- Energy transition
- Housing quality and impact
- Eco systemic services

2. Social and employment challenges

- Job and skills
- Social inclusion
- Urban poverty
- Inclusion of Migrants and Refugees
- Food Justice and security

3. Resilient and sustainable urban economies

- Urban logistics and goods delivery
- Circular economy
- Sustainable tourism, leisure and place attractiveness
- Safety nets

4. Historical, landscape and architectural urban issues

- Resilient cities, urban resilience
- Historical aspects
- Visual identity and architecture
- Heritage as economic resource

5. Governing the cities

- Local and regional governance
- Urban-rural relations
- Territorial governance
- Public finance
- Digital transition
- Public procurement
- Security in public spaces

The Hub Council will make recommendations to the Task Force for Research and Academic Affairs (WP4), who will make final recommendations to the CIVIS Steering Committee as to which courses and/or activities will be part of Hub 4 for the next academic year.

1. Calendar and submission

| | |
|---------------------------------|--|
| Start of the Application period | 1 october 2021 |
| Networking Session #1 | 18 october 12-13h Click on this link to join the meeting |

| | |
|-----------------------|---|
| Networking Session #2 | 27 october 16h30-17h30 Click on this link to join the meeting |
| Applications Deadline | 15 november 2021 |
| Official Answer | 24 december 2021 at the latest |

APPENDIX

ELIGIBLE COSTS FOR MOBILITIES

- CIVIS only finances travel costs and allowances for students and/or academic staff for short term mobility (students: 2 days – 2 months/academics: max. 1-2 weeks).
- Student mobility will be financed according to the unit cost established in CIVIS Consortium Agreement (see below).
- Academic staff mobility could include training activities with students and activities to develop future joint initiatives.
- Academic staff mobility will be financed according to each institution's usual practices.
- Limitations as to the numbers of funded mobilities of students or academic staff may apply, subject to availability of funds.
- CIVIS budget will directly finance only mobilities currently not eligible under other Erasmus+ actions.

ELIGIBLE STAFF COSTS

CIVIS can finance some staff costs ('incentives') related to the implementation of the selected activities.

- Funds are to be allocated for staff costs for the development of activities that support the objectives and strategic priorities of CIVIS and in particular the development of programmes and degrees. The funds cannot be used for mobility costs (travels and subsistence).
- Funds are to be allocated to the development of physical, virtual or blended courses, modules and programmes.
- Hub Council may decide if all CIVIS universities participating in an activity will get an equal maximum amount or if the coordinator of a project will get additional funds.
- **Funding per activity will range between 1.000-8.000 EUR, unless the Hub Council decides that there are distinct reasons for allocating extra resources based on the complexity of the activity.**
- Each receiving university will decide internally how the funds are to be allocated to staff costs, as long as it is in accordance with the information provided in the approved application.
- All costs are to follow reporting rules of the European Commission and will be distributed and reported according to procedures set up by the CIVIS Alliance. The university responsible for coordinating the activity is also in charge of financial reporting unless otherwise agreed.

CIVIS financial support is available until September 2022.

No CIVIS budget is allocated for other costs.

No CIVIS equipment budget is allocated for digital mobility/activities.

STUDENT MOBILITY BUDGET CALCULATION

- Travel costs and individual support for student short term and blended mobility activities are based on unit costs applying as an internal rule to all the beneficiaries.
- These unit costs are based on Erasmus+ 2020 program guide and are the following:
 - Travel costs based on the travel distance per participant: travel distances must be calculated

using the distance calculator supported by the European Commission
(http://ec.europa.eu/programmes/erasmus-plus/tools/distance_en.htm).

- The distance of a one-way travel must be used to calculate the amount of the EU grant that will support the round trip.
- Individual support based on the duration of the stay per participant (if necessary, including also one travel day before the activity and one travel day following the activity).

Travel costs:

| Travel distances ³⁴ | Amount |
|--------------------------------|--------------------------|
| Between 10 and 99 KM: | 20 EUR per participant |
| Between 100 and 499 KM: | 180 EUR per participant |
| Between 500 and 1999 KM: | 275 EUR per participant |
| Between 2000 and 2999 KM: | 360 EUR per participant |
| Between 3000 and 3999 KM: | 530 EUR per participant |
| Between 4000 and 7999 KM: | 820 EUR per participant |
| 8000 KM or more: | 1500 EUR per participant |

Individual support:

| Individual Support per day | | | | | | | |
|----------------------------|---------|---------|---------|---------|---------------|---------|---------|
| E+ guide 2020 | Sweden | Greece | Germany | Belgium | France, Italy | Spain | Romania |
| Youth worker | 70,00 € | 71,00 € | 58,00 € | 65,00 € | 66,00 € | 61,00 € | 54,00 € |